



## TRU Research Community,

Welcome back! As you will soon discover, there has been a dramatic uptick in the pace of research at TRU throughout the summer. We are deeply appreciative of how quickly students, staff, and faculty have adapted to new modes of working, learning, teaching, and knowledge creation. During this hectic time, there have also been staffing reductions and changes made to mitigate the financial impact of COVID-19 on the institution. As a result, we want to pay special thanks to **Dominique Hazel**, who has worked with us as the coordinator of student research and public engagement for almost two years. Dominique's student-centred approach eased our students' entry to the research process. She has been highly instrumental in the development of TRU's Research Coach program, in our Undergraduate Research Ambassador program, the Graduate Research Mentor program and the coordination of many events and initiatives which contributed to building capacity for student research at TRU. Most notably, when campus closed in March, Dominique supported nearly 200 research students, working with them to ensure the continuity of their research throughout the spring and summer. Dominique's presence in the Office of Research and Graduate Studies will be greatly missed.

## COVID-19 research impacts

The Research Office is committed to providing up-to-date information designed to facilitate the continuation of faculty and student research during this global pandemic. [This website](#) will be updated regularly, and includes links to Tri-Agency pandemic response, information about research continuity planning, guidelines for research teams, travel awards, funding opportunities, and more. We advise you bookmark this page and check back regularly, as this situation is

rapidly changing.

## Remote thesis defences continue

Remote thesis defences are conducted using BlueJeans, and specific meeting connection instructions will be provided in announcements that are distributed to the TRU community.

### Congratulations:

- **Claudie Pageau**, Master of Science in Environmental Science, "Evolution of moulting strategies and altitudinal migration of passerines."
- **Janelle Paulson**, Master of Science in Environmental Science, "Soil legacy effects on growth of native and nonnative species in temperate grasslands in the Southern Interior of BC."

## Virtual graduate orientation a success

This year's graduate orientation session was hosted by our Graduate Mentors, and was a resounding success, with 60 students in attendance. Also presenting at orientation were coordinators from each of the graduate programs, as well as the Library. Orientation was recorded, and [can be viewed via Teams](#). Special thanks to Andrea Rhodes from IT Services for providing fantastic technical support, and to the Research Office's Emily Mullen for organizing the event.

## Research initiatives

### Tap into Research: Looking for presenters

We are thrilled with the response to our virtual Tap into Research series, and are currently searching for presenters for the months of September and October. If you are interested in working with us to share your knowledge with the community, contact [Danna Bach](#).

Gift of Learning  
50  
EST. 1950



### From the archive

- **Rob Higgins**, [Invaders, slave-takers & vampires: The ants of BC](#), (premiered Aug. 12)
- **Donald Lawrence** (with Charo Neville), [Catching the eye adrift: A visual arts presentation](#) (premiered Aug. 5)

## Research News

### Can CBD and nitric oxide prevent the spread of COVID-19?

Joanna Urban, John Church and Kingsley Donkor are working toward the development of an antiviral nasal spray and mouthwash using high-cannabidiol extracts, terpenes, and nitric oxide.

[Read more](#)



### Newly funded research explores connectivity, marine invertebrates and rattlesnakes

Three researchers will share in nearly \$350,000 from the Natural Sciences and Engineering Research Council (NSERC) Discovery Grants program.

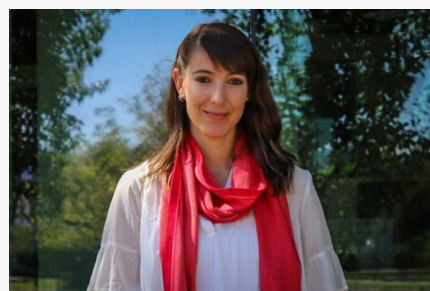
[Read more](#)



### New Research tools coming to TRU

The Government of Canada through the Canada Foundation for Innovation has invested \$350,000 in high-performance tools to allow TRU faculty and students to conduct ground-breaking research.

[Read more](#)



### TRU faculty member leads national project to support nurses during pandemic

Judy Duchscher, associate professor in the School of Nursing is heading a nationwide project to provide support for new nurses during the pandemic.

[Read more](#)

## TRU records unprecedented research grant success

The federal government has invested \$500,000 in research projects that explore Secwepemctsin language, the history of unbelief in Canada, and BC's opioid epidemic.

[Read more](#)



## TRU heads collaborative research into wildfires

The Province of BC has invested \$5 million for the establishment of the BC Research Chair in Predictive Services, Emergency Management and Fire Science, to be based at TRU.

[Read more](#)



## Searching for signs of COVID-19 in Kamloops' sewage

TRU's Jonathan Van Hamme is leading a team looking to detect signs of COVID-19 in the city's sewage.

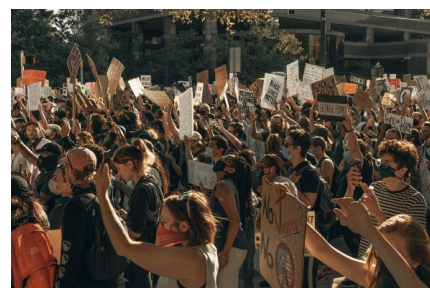
[Read more](#)



## Understanding the impact of social justice in Canadian high schools

Manu Sharma aims to better understand what is taking place in diverse communities and how some high schools are setting themselves apart as leaders.

[Read more](#)



## Mapping the resiliency of frontline health-care workers

Bala Nikku, assistant professor of social work, leads a team of researchers studying resilience among frontline health-care workers.



[Read more](#)

## Share your expertise

As you can see below, media is reaching out to TRU routinely, searching for experts to speak on a variety of issues. Please make yourself easy to find by joining the Experts List. For more information, please reach out to [Danna Bach](#), or take a moment and [simply register online](#).

## Research in the media

### Chatelaine | Race, Religion And Mental Health: Therapy Should Be Culturally Relevant

Sept. 8, 2020 — Rod McCormick, director of All My Relations Research Centre, offers insights into mental health treatments that are not standard practice in North America, including connecting with nature.

[Read more](#)

### Education News Canada | Nursing faculty member appointed to First Nations Health Authority

Sept. 9, 2020 — Sheila Blackstock from TRU's School of Nursing has been appointed as the Interior representative for the First Nations Health Authority.

[Read more](#)

### The Globe and Mail | Is it time to decolonize your lawn?

Sept. 5, 2020 — TRU historian John Belshaw explains how our green lawns go

back to settler culture.

[Read more](#)

## [CBC North by Northwest | Scientist Series, featuring Tom Dickinson](#)

Sept. 5, 2020 — TRU's former Dean of Science, Tom Dickinson was recently featured, and discusses his love of birds. The interview begins at 2:10:00.

[Read more](#)

## [The Conversation Canada | 8 tips to support Grade 1 readers at home](#)

Sept. 4, 2020 — Teaching children how to read is primarily a teacher's job, but parents play a valuable role. Studies show that children who develop strong reading skills are more successful in school, more likely to go to university, and more likely to achieve a high quality of life. TRU's Gloria Ramirez offers parents some ideas on how to help their children develop a love of reading.

[Read more](#)

## [The Lynda Steele Show | A nasal spray to ward off COVID-19?](#)

Sept. 3, 2020 — Lynda Steele from CKNW speaks with TRU's John Church about a new collaborative project that explores whether CBD and nitric oxide might block or prevent the transmission of COVID-19.

[Read more](#)

## [The Conversation Canada | A brief history of celebrity cameos, from 'Sunset Boulevard' to 'Eurovision Song Contest'](#)

Aug. 20, 2020 — Cameo appearances ask us to think outside the boundaries of the film we are watching and remember all of the details we know about the person we see on screen. The cameo is disruptive, but it is also rewarding. Joceline Anderson, assistant teaching professor, explores how cameos have changed our relationship with movies and with actors.

[Read more](#)

## [CBC North by Northwest | Jonathan Van Hamme, environmental microbiologist, studying sewage DNA](#)

Aug. 22, 2020 — Jonathan Van Hamme talks with guest-host Grant Lawrence about career path, as well as a new project that he is currently leading, looking for genetic traces of the COVID-19 virus in Kamloops' sewage.

[Read more](#)

## [Radio NL | TRU lecturer says new Tory leader O'Toole's approach not the same as Trump](#)

Aug. 27, 2020 — Conservatives have elected Erin O'Toole as their new leader, and Jeffrey Meyers of TRU's Faculty of Law says the new Tory leader is trying to appeal to a much broader group than U.S. President Donald Trump.

[Read more](#)

## [Castanet Kamloops | Proactive approach needed \(for Indigenous mental health support\)](#)

Aug. 27, 2020 — The Canadian government has announced \$82.5 million in mental health and wellness supports for Indigenous communities, and while the funding is welcomed, TRU's Rod McCormick says that it may be spread so thin that it won't result in effective solutions.

[Read more](#)

## [Ottawa pledges \\$82.5-million for Indigenous mental health support during pandemic](#)

Rod McCormick was sought for comment on the \$82.5-million promised by Ottawa for Indigenous mental health supports during the pandemic.

[Read more](#)

## [Castanet Kamloops | Preventing nurse burnout](#)

Aug. 13, 2020 — Judy Duchscher of TRU's School of Nursing is leading a national project to reduce burnout in new nurses. She has assembled a team of

students, graduates and experts to create a web-based network of support.

[Read more](#)

## [Radio NL | NL Morning News - Jeffrey Meyers on Joe Biden's running mate choice of Kamala Harris](#)

Aug. 13, 2020 — Popular political commentator Jeffrey Meyers speaks about Kamala Harris getting the nod on the Democratic ticket with Joe Biden.

[Read more](#)

## [News 1130 | Outdoor education needed in B.C. as more people head outside during pandemic](#)

Aug. 11, 2020 — The province's push to get British Columbians exploring the great outdoors during the pandemic without teaching them how is leading people to trouble on trails and in the backcountry, according to TRU's Iain Stewart- Patterson.

[Read more](#)

## [Radio NL | Kirk Fraser - Sandra Vermeulen on COVID pushback](#)

Aug. 4, 2020 — Psychology faculty member Sandra Vermeulen discusses the factors that lead to people pushing back on COVID-19 safety measures.

[Read more](#)

## [The Guardian | Trump's hint that he may not concede election is America's tipping point](#)

July 24, 2020 — Jeffrey Meyers, a lecturer in TRU's Faculty of Law, explains why we can all intuit the the cult of personality surrounding Trump is powerful and will be difficult to dislodge, whenever the outcome of November's election.

[Read more](#)

## [The Conversation Canada | Canada must navigate U.S.-China](#)



## tensions by staying true to its values

July 14, 2020 — Robert Hanlon examines Canada's current strained relationships with China and the US, and how the Canadian government's inability to navigate the ongoing rivalry between the two giants has exposed a striking dysfunction in Canada's foreign policy.

[Read more](#)

## Funding news

### [Resources for FAST training](#)

TRU's Finance Department has created a video for researchers that explains how to access their funds and pin their fund reports in order to simplify the process of finding their fund balances. The video is designed from the point of view of the researcher.

### COVID-19 Research Impacts

For the most up-to-date- news on Tri-Agency response to COVID-19, please visit the following:

- [COVID-19 Impacts on SSHRC's Policies and Programs](#)
- [NSERC program information in relation to COVID-19](#)
- [CIHR: Coronavirus disease \(COVID-19\)](#)

## Funding opportunities (external)

A new calendar for [COVID related research grants](#) has been created, and features sponsored research opportunities on the novel coronavirus.

- The internal deadline for all applications is **two weeks prior** to the listed deadline. This allows time to receive critical review, obtain support letters and appropriate institutional approval. Please contact [Anita Sharma](#) or [Megan Prins](#) at the earliest opportunity to receive extensive grant development support.

### CIHR

#### [Spring and Fall Project Grant:](#)

**Deadlines:** Sept. 16, 2020 (fall registration); Oct. 14 (full registration), March 4 (spring registration); March 1 (full registration).

This program is designed to capture ideas with the greatest potential for important advances in fundamental or applied health-related knowledge, health care, health systems, and/or health outcomes. The best ideas may stem from new, incremental, innovative, and/or high-risk lines of inquiry or knowledge translation approaches. Please also see [Priority Announcements](#) that offer additional sources of funding for highly rated applications.

### [Team Grant: Food Security and Climate Change in the Canadian North](#)

**DEADLINE CHANGE: LOI: Dec. 31** (successful LOIs will be awarded \$25,000 to develop a full application)

**Award amount: Up to 1.5 million over 4 years.**

The goal of this initiative is to support multidisciplinary teams of researchers, knowledge users and/or partners to work together to address food security and climate change in the North.

## SSHRC

### [Insight Grants](#)

**Deadline: Oct. 1**

**Award amount: Stream A: \$7,000 to \$100,000; Stream B: \$100,001 to \$400,000**

Insight Grants support research excellence in the social sciences and humanities. Funding is available to both emerging and established scholars for research initiatives. Stable support for long-term research initiatives is central to advancing knowledge. It enables scholars to address complex issues pertaining to individuals and societies, and to further our collective understanding. Insight Grant research initiatives may be undertaken by an individual researcher or a team of researchers working in collaboration.

### [Connection Grants](#)

**Deadlines: Nov. 1, Feb. 1**

**Award amount: \$7,000 to \$25,000 (events); up to \$50,000 (outreach activities)**

Connection grants support events and outreach activities geared toward short-term, targeted knowledge mobilization initiatives. Events and outreach activities funded by a Connection Grant may often serve as a first step toward more comprehensive and longer-term projects potentially eligible for funding through other SSHRC funding opportunities listed in SSHRC's Funding search tool.

## SSHRC Partnership Development Grants

**Deadline: Nov 15**

**Value: \$75,000 to \$200,000**

These grants provide support to teams/partnerships to: i) develop research and related activities in the social sciences and humanities, including knowledge mobilization and the meaningful involvement of students and new scholars, by fostering new partnerships for research and related activities involving existing and/or potential partners; or ii) design and test new partnership approaches for research and/or related activities that may result in best practices or models that either can be adapted by others or have the potential to be scaled up to a regional, national or international level.

## Partnership Engage Grants

**Deadlines: Dec. 15**

**Award amount: \$7,000 to \$25,000**

These grants provide short-term and timely support for partnered research activities that will inform decision-making at a single partner organization from the public, private or not-for-profit sector. The partnerships supported through these grants respond to immediate needs and time constraints facing organizations in non-academic sectors.

## SSHRC Insight Development Grants

**Deadline: Feb 3 (TBA)**

**Value: \$7,000 to \$75,000/two years**

Insight Development Grants (IDG) enable the development of new research questions, as well as experimentation with new methods, theoretical approaches and/or ideas. IDGs foster research in its initial stages, but are not intended to support large-scale initiatives. Funding is available to both emerging and established scholars and 50% of the budget is reserved for emerging scholars.

## NSERC

### NSERC Idea to Innovation (I2I) Grants

**Deadlines: Sept 28; Jan. 6**

**Award value: \$15,000-\$350,000\***

*\*Applicants must contact [Lincoln Smith](#) to discuss partnerships, IP, and research agreements prior to applying for this grant*

The Idea to Innovation (I2I) grants will accelerate the pre-competitive

development of promising technology originating from the university and college sector and promote its transfer to a new or established Canadian company. The I2I grants provide funding to college and university faculty members to support research and development projects with recognized technology transfer potential. This is achieved through defined phases by providing crucial assistance in the early stages of technology validation and market connection

### [NSERC Research Tools and Instruments grants](#)

**Deadline: Oct. 25**

**Award value: \$7,001-\$150,000**

Research Tools and Instruments (RTI) grants foster and enhance the discovery, innovation and training capability of university researchers in the natural sciences and engineering by supporting the purchase of research equipment and installations.

### [NSERC Discovery Grants](#)

**Deadline: Nov. 1**

The Discovery Grants Program supports ongoing programs of research in the natural sciences and engineering with long-term goals. These grants recognize the creativity and innovation that are at the heart of all research NSERC.

### [Alliance Grants](#)

**Deadlines: ongoing**

NSERC is pleased to announce the opening of the next phases of [Alliance grants](#). Alliance grants are now open for [Option 1](#) applications requesting over \$20,000 annually from NSERC, and [Option 2](#) applications requesting support for up to 90% or 100% of the costs of the project are now open.

Alliance grants encourage university researchers to collaborate with partner organizations, which can be from the private, public or not-for-profit sectors.

Please also see [slide deck](#) from NSERC Research and Innovation

Development Officer, Pam Giberson's presentation at TRU. And an Alliance Grant application "[Top Tips](#)" document.

## Government of Canada

### [COVID-19 Community Task Force - COVID-19 Hot Spots - Request for Expressions of Interest \(RFEOI\)](#)

**Deadline: Sept. 21 (expressions of interest); Oct. 12 (full proposal)**

These grants are for population-based studies that will report novel data relating to COVID-19 infection and immunity in three types of COVID-19 "hot spots": i)

geographic areas; ii) long-term care facilities; and iii) occupation groups. Studies focusing on hot spots are expected to provide a more in-depth understanding of the dynamics of SARS-CoV-2 infection and immunity in high-versus low-risk communities and/or prospectively evaluate interventions to decrease risk of infection in these settings.

## Government of Canada

### Canadian Space Agency - [Lunar Exploration Accelerator Program \(Leap\)](#)

**Deadline: [Request for Proposals-Letter of Intent](#) (rolling to March, 2022)**

The Canadian Space Agency is preparing Canada's space community and collaborating sectors, including Canadian companies, universities, research institutions, and other organizations, for potential roles in the long-term exploration of the Moon. The Lunar Exploration Accelerator Program (LEAP) was created to provide a wide range of opportunities for Canadian science and technology activities in lunar orbit, on the Moon's surface, and beyond. LEAP is looking to [foster innovation in areas of strength for Canada](#), like artificial intelligence, robotics, science and health.

## Government of Alberta

### [Supporting Physical Health in First Responders](#)

**Deadline: Sept. 20**

Alberta's firefighters, police officers, paramedics, sheriffs, corrections officers and emergency health care workers often deal with stressful, dangerous and traumatic situations. This stress has a negative impact on first responders and emergency health care workers. They often experience post-traumatic stress injuries (PTSI) at significantly higher rates than the general population.

This grant program has 2 separate funding streams:

- **Stream 1** (Services) provides funding for non-profit organizations that provide services to first responders and emergency health care workers living with or at risk for PTSI.
- **Stream 2** (Research) provides funding to researchers engaged in applied research that generates evidence on prevention or intervention for first responders and emergency health care workers living with or at risk for PTSI.

## Foundations

### [Max Bell Foundation: Project Grants and Development Grants](#)

**Deadline: Ongoing**

**Award amount: \$10,000-\$200,000/ 1-3 years**

**Project Grants** support clearly defined activities designed to achieve a specific objective that aligns with the Foundation's mission and criteria and that seek to support projects with a high likelihood of informing public policy and practice. Current program areas include: Health & Wellness; Education; the Environment.

**Development Grants** support organizations who wish to undertake short-term (typically 4 month) work that will better position them to succeed with larger projects (e.g., environmental scanning; background research; project planning; proposal development etc.). Development grants are described in more detail [here](#).

### [Michael Smith Foundation for Health Research: Convening & Collaborating \(C2\), and Reach](#)

**NEW Deadline: Sept. 28**

**Award amount: Up to \$15,000**

C2 awards bring together researchers and research users to co-develop research aligned with BC's health system priorities. Reach awards bring together researchers and research users to support the dissemination of research evidence, within the context of related knowledge, and increase its potential impact. Together, teams co-develop events, activities, and/or tools, so they can share research findings and evidence with audiences who can directly use the knowledge.

## Fellowships

### [National Sanitarium Association \(NSA\) Scholars' Program](#)

**Deadline: Oct. 15**

**Value: 100,000/year over 5 years**

NSA Scholars will be involved in innovative, emerging, and important new areas of research in the broad field of pulmonary science and medicine. It is anticipated that Scholars may be working with colleagues who share complementary research interests, but the Scholar will be expected to add a distinctly new direction or innovative dimension to the group in an emerging area of importance.

## Funding opportunities (internal)

### [Undergraduate Research Apprenticeship Fund](#)

**Deadline: Sept. 28**

### **Value: \$3,000 per student**

The Office of Research and Graduate Studies offers this program for faculty members who are engaged in research, scholarship and creative inquiry, allowing them to hire a student to assist in accelerating their research and to provide an apprentice with a meaningful training opportunity. Application is initiated by the faculty member when they have identified a qualified student. Applicants should explain their process of identifying, recruiting and selecting research apprentices based on equity and diversity best practices as one means to enhance excellence in research, training and outreach. Please submit your applications in Romeo using UG Research Apprenticeship application form.

### [Research Training Recognition Fund](#)

#### **Deadline: Oct. 15**

Those regular faculty receiving or currently holding multi-year Tri-Agency research grants are eligible to receive a reallocation of workload (e.g., from 5 courses to 4 courses) to facilitate their direct involvement in the enhanced research training of undergraduate and graduate students. The RTRF is an ongoing fund with a minimum of \$140,000 annually available. Eligibility Criteria: Must hold a multi-year Tri-Agency research grant (as Principal Investigator); must make a commitment to significant student research training.

## Funding opportunities (students)

### [Undergraduate Research Experience Award Program \(UREAP\)](#)

#### **Value: \$6,000**

The UREAP can help you get started on your own original research. To qualify you must:

- Be a full time student of TRU at the time of application and be enrolled in an undergraduate program of study
- Have completed a minimum of 60 credits of undergraduate study at the time of application
- Have a minimum GPA of 3.2\*
- Have a faculty member who is willing to mentor you and guide your project
- Not have received a UREAP award in the past
- Not hold a UREAP and an NSERC-USRA at the same time, for the same project

### [Environmental Science and Natural Resource Science Fellowship Award](#)

**Deadline: Nov. 15**

**Value: \$7,500**

The fellowship was generously created by an anonymous donor for the development of two awards; one for Environmental Sciences and one for Natural Resource Sciences. Recipients — either senior undergraduate or graduate students — will be selected based on their scholarly achievements, their commitment to research and their demonstrated potential for future contributions to our understanding of the environment.

[British Columbia Graduate Scholarships](#)

**Deadline: Dec. 1**

**Value: \$15,000/Four awards available**

Students enrolled in research intensive and professional programs are encouraged to apply. Awards will be given to domestic students (Canadians or permanent residents) based on academic achievement. Students must be entering their first or second year of full-time on-campus study.

[Canada Graduate Scholarship – Masters \(CGS-M\)](#)

**Deadline: Dec. 1 (competition opens in September)**

**Value: \$17,500 for 12 months, non-renewable**

TRU offers four CGS-M entrance awards for domestic students, one each from the Canadian Institute of Health Research (CIHR) and the Natural Sciences and Engineering Research Council (NSERC), and two from the Social Sciences and Humanities Research Council (SSHRC). These three granting agencies have harmonized the application process. The application must be completed through the [Research Portal](#). It is recommended students begin this process as soon as possible.

## Knowledge mobilization

### Presentations

Adams, A. S., Bruer, K. C., **Price, H. L.**, & Oriet, C. (2020, March). *Can children's prospective memory beliefs influence lineup decisions?* Paper presented at the Annual meeting of the American Psychology-Law Society, New Orleans, Louisiana, USA.

Anderson, S. F., **Price, H. L.**, & Connolly, D. A. (2020, March). *A comparison of accuracy in old versus new memory reports across interview techniques.* Paper



presented at the Annual meeting of the American Psychology-Law Society, New Orleans, Louisiana, USA.

Bruer, K. C., Evans, A. D., & **Price, H. L.** (2020, March). Methods for promoting truthful disclosures from peer disclosure recipients and witnesses. Paper presented in symposium K. McWilliams(Chair), *From children's reports to jurors' perceptions: Promoting honest, details, and objective evidence*. Annual meeting of the American Psychology-Law Society, New Orleans, Louisiana, USA.

**Hanlon, Robert J.** (18 August 2020). "Webinar: China's rise as a Global Actor." Invited speaker. School of Humanitarian Studies, Royal Roads University, Victoria, Canada.

Harvey, M. B. Bruer, K. C., & **Price, H. L.** (2020, March). *Perceptions of ear- and eye-witnesses' familiarity with a defendant*. Paper presented at the Annual meeting of the American Psychology-Law Society, New Orleans, Louisiana, USA.

**Kamphuis, Charis.** (2020). "Protest from a comparative and global perspective." Invited presenter on the New Fundamental Right to Social Protest, Institute of Legal Defence, Indigenous Peoples Group, Lima, Peru.

**Martin, B.**, Walsh, L., Keating, A., Geiger, S. (2020). Ineffectual orders: Habituated effectuation in a scaling social enterprise. Paper presented at the annual conference of the academy of management, Vancouver, BC.

**Martin, B.**, & Carayannopoulos, S. (2020). Social enterprise transcendent: How a theory of organizational form outcomes shows social enterprise to be the business of the future. Paper presented at the annual meeting of the association for nonprofit and social economy research, London, Ontario.

**Nikku, B. R.** (2020) Keynote presentation: "Mapping social epidemiology of BC: COVID19 pandemic and psycho social and occupational wellbeing of frontline healthcare workers in BC." BC COVID-19 Research and Collaboration Symposium: Public Health, Populations, Health Services and Impacts, Sept. 1-2, 2020.

Patel, U., Anderson, S., Harvey, M., B., **Price, H. L.**, & Connolly, D. A. (2020, March). *A mixed-methods evaluation of judicial inferences in child sexual abuse cases*. Paper presented at the Annual meeting of the American Psychology-Law Society, New Orleans, Louisiana, USA.

## Published books, chapters & articles

Ahmed, F., Naeem, **M.**, **Ejaz**, W., Iqbal, M., Anpalagan, A., & Haneef, M. (2020). Energy cooperation with sleep mechanism in renewable energy assisted cellular HetNets. *Wireless Personal Communications*, doi:10.1007/s11277-020-07707-2

Attarod, P., Tang, Q., **Pypker, T. G.**, Liu, X., & Bayramzadeh, V. (2020). Potential impact of climate change on throughfall in afforestation areas located in arid and semi-arid environments. *Null*, , 1-16.  
doi:10.1080/15324982.2020.1804010

Bachman, J. R., **Hull, J. S.**, & Haecker, S. (2020). Millennials are not all the same: Examining millennial craft brewery and winery visitors' social involvement, self-image, and social return. *International Journal of Tourism Research*, n/doi:10.1002/jtr.2400

**Baugh, B.** (2020). Hegel and sartre: The search for totality. In J. Stewart (Ed.), *The palgrave handbook of german idealism and existentialism* (pp. 499-521). Cham: Springer International Publishing. doi:10.1007/978-3-030-44571-3\_20 Retrieved from [https://doi.org/10.1007/978-3-030-44571-3\\_20](https://doi.org/10.1007/978-3-030-44571-3_20)

**Dagne, Tesh. W.** (2020). Governance of 3D-printing applications in health: Between regulated and unregulated innovation. *The Columbia Science & Technology Law Review*. (21).

García-Díez, G., & **Mora-Diez, N.** (2020). Theoretical study of the iron complexes with aminoguanidine: Investigating secondary antioxidant activity. *Antioxidants*, 9(8), 756. doi:10.3390/antiox9080756

**Latif, E.**, & **Miles, S.** (2020). The impact of assignments and quizzes on exam grades: A difference-in-difference approach. *Null*, , 1-12.  
doi:10.1080/10691898.2020.1807429

Liu, A., **Arora, P.**, & Sareen Meenakshi. (2020). Introduction to novel coronavirus disease 2019 (COVID-19), it's impact and treatments under investigation. *Infection Epidemiology and Microbiology*, 6(2), 143-151.  
Retrieved from [https://iem.modares.ac.ir/files/iem/user\\_files\\_749497/pun\\_pint-A-10-54683-3-c7e732d.pdf](https://iem.modares.ac.ir/files/iem/user_files_749497/pun_pint-A-10-54683-3-c7e732d.pdf)

Loucks, J., Blakley, T., & **Price, H. L.** (2020). Memory for temporal order in novel sequential action. *Journal of Cognitive Psychology*, 32, 382-390.

Mammola, S., Amorim, I. R., Bichuette, M. E., Borges, P. A. V., **Cheeptham, N.**, Cooper, S. J. B., . . . Cardoso, P. (2020). Fundamental research questions

in subterranean biology. *Biological Reviews*, n/a doi:10.1111/brv.12642

McCune, J. L., Frendo, C. J., Ramadan, M., & **Baldwin, L. K.** (2020). Comparing the effect of landscape context on vascular plant and bryophyte communities in a human-dominated landscape. *Journal of Vegetation Science*, n/a doi:10.1111/jvs.12932

McEwen, J., Fredeen, A., **Pypker, T.**, Foord, V., Black, T. A., Jassal, R., & Nestic, Z. (2020). Carbon storage recovery in surviving live lodgepole pine (*Pinus contorta* var. *latifolia*) 11 years after mountain pine beetle attack in northern British Columbia, Canada. *Canadian Journal of Forest Research*, doi:10.1139/cjfr-2019-0394

**Nikku, B.** (Ed.). (2020). *Global social work: Cutting edge issues and critical reflections* IntechOpen.

**Price, H. L.**, Bruer, K. C., & Atkins, M. C. (2020). Using machine learning analyses to explore relations between eyewitness lineup looking behaviors and suspect guilt. *Law and Human Behavior*, 44, 223-237.

Pulla, V.R., Das, T.K., **Nikku, B. R.** (2020). Indigenous or Blended Model for South Asian Social Work? *Space and Culture, India*, 8(1): 40-58.

**Raja, Z. A.**, Procasky, W. J., & Oyotode-Adebile, R. (2020). The relative role of sovereign CDS and bond markets in efficiently pricing emerging market sovereign credit risk. *Journal of Emerging Market Finance*, , 0972652720932772. doi:10.1177/0972652720932772

Ros, M., **\*Weaver, L.**, & Neuwirth, L. S. (2020). Virtual reality stereoscopic 180-degree video-based immersive environments: Applications for training surgeons and other medical professionals. In Jill Stefaniak (Ed.), *Cases on instructional design and performance outcomes in medical education* (pp. 92-119). Hershey, PA, USA: IGI Global. doi:10.4018/978-1-7998-5092-2.ch005 Retrieved from <http://services.igi-global.com/resolvedoi/resolve.aspx?doi=10.4018/978-1-7998-5092-2.ch005>

**\*Ross, P. P.**, & **Mason, C. W.** (2020). Examining local food procurement, adaptive capacities and resilience to environmental change in Fort Providence, Northwest Territories. *Canadian Food Studies / La Revue Canadienne Des Études Sur L'Alimentation*, 7(1), 20-43. doi:10.15353/cfs-rcea.v7i1.373

Sudina, E., **Brown, J.**, Datzman, B., Oki, Y., Song, K., Cavanaugh, R., . . . Plonsky, L. (2020). Language-specific grit: Exploring psychometric properties,

predictive validity, and differences across contexts. *Null*, , 1-18.  
doi:10.1080/17501229.2020.1802468

**W. Ejaz**, M. Naeem, S. K. Sharma, A. M. Khattak, M. R. Ramzan, A. Ali, & A. Anpalagan. (2020). *IoV-based deployment and scheduling of charging infrastructure in intelligent transportation systems* doi:10.1109/JSEN.2020.3006706

*\*Indicates student author*